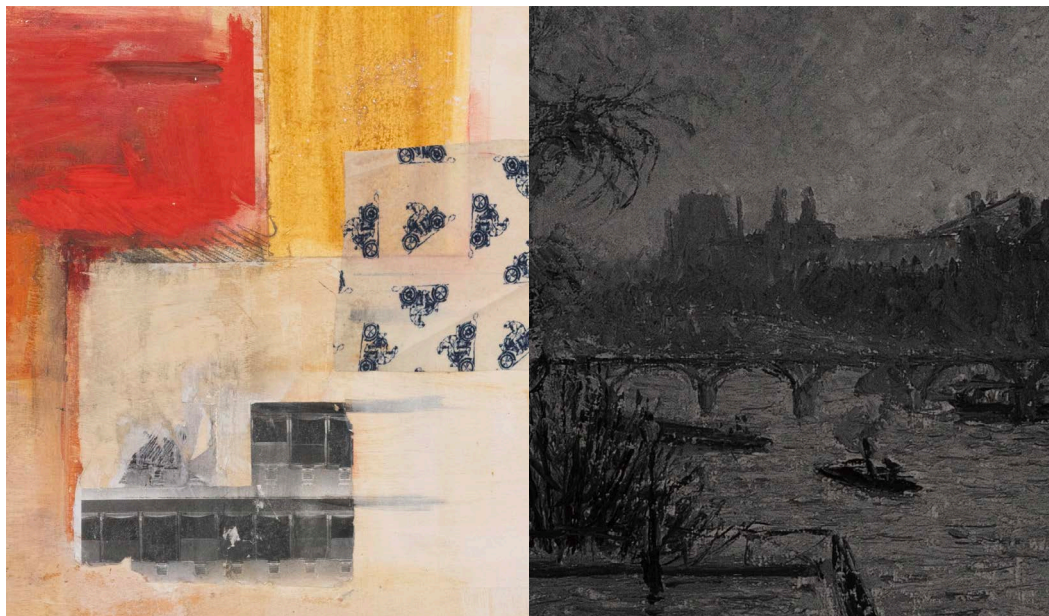


# SWEETWATER,

Sofia Defino Leiby, Constantin Thun

Paris Internationale, Booth 5.11, October 17–22, 2023



Sofia Defino Leiby's paintings consist of layered techniques in combination, often including screenprinted and collaged elements alongside oil, acrylic, and watercolor brushwork. The content of her works is often drawn from her surroundings, featuring storefronts, advertising material, and commercial architecture, approached with a sensitivity toward the consumerist nature of the imagery. Walking a fine line between irony and earnestness, between skepticism and reverence, Leiby's work portrays urban life under the modern economy.

Also present in the booth will be six framed prints of scans from the catalogue raisonné of Camille Pissarro, depicting paintings of his view from an apartment on the Place Dauphine made between 1900 and 1903. Pissarro, then in his 70s, painted the Pont Neuf and the Place du Vert-Galant year-round while in the apartment, in his intuitive, impressionistic style, depicting his observations of the city around him. The scans of images of these paintings have been converted to grayscale, printed on metallic photographic paper, and hung loosely in their frame. Also on view are two weathered and knotted planks of wood, which sit atop a pedestal of folded polyethylene with a tubular light bulb and a postcard of Goya's *Still Life with Three Salmon Steaks*.